

How to install the driver for USB cable

Following instructions are based on Windows XP using the accompanying CD-ROM.

1. Please disconnect USB cable from PC. Install the driver from CD-ROM in the usual procedure.

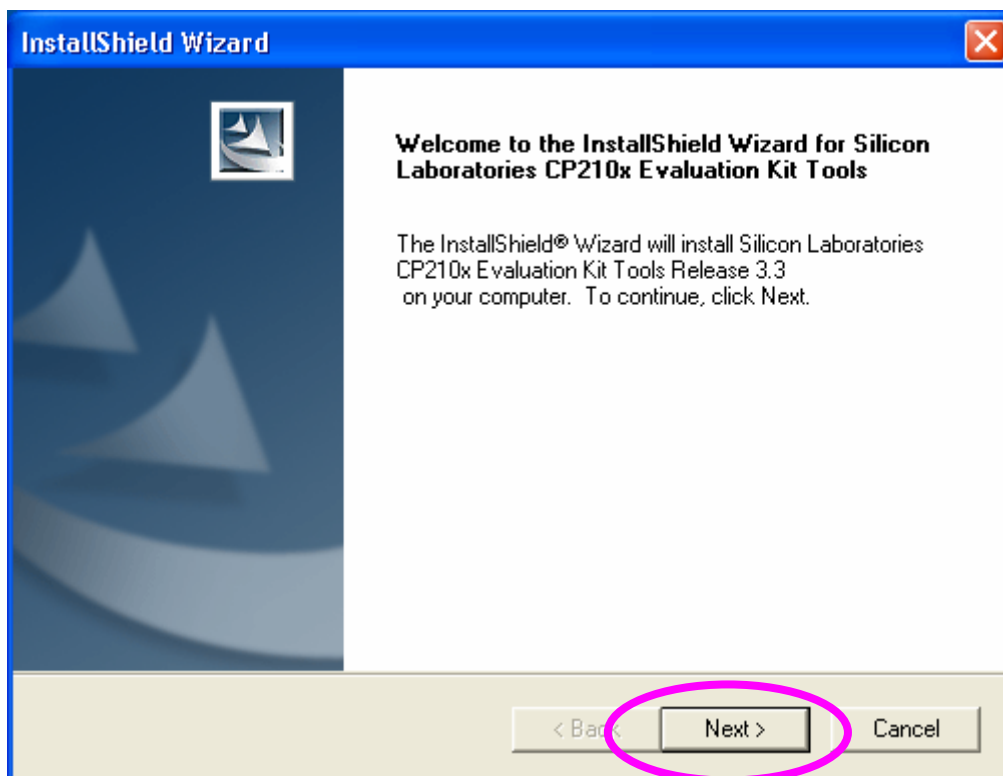
At this time, the driver will be copied to the hard disc of the PC.

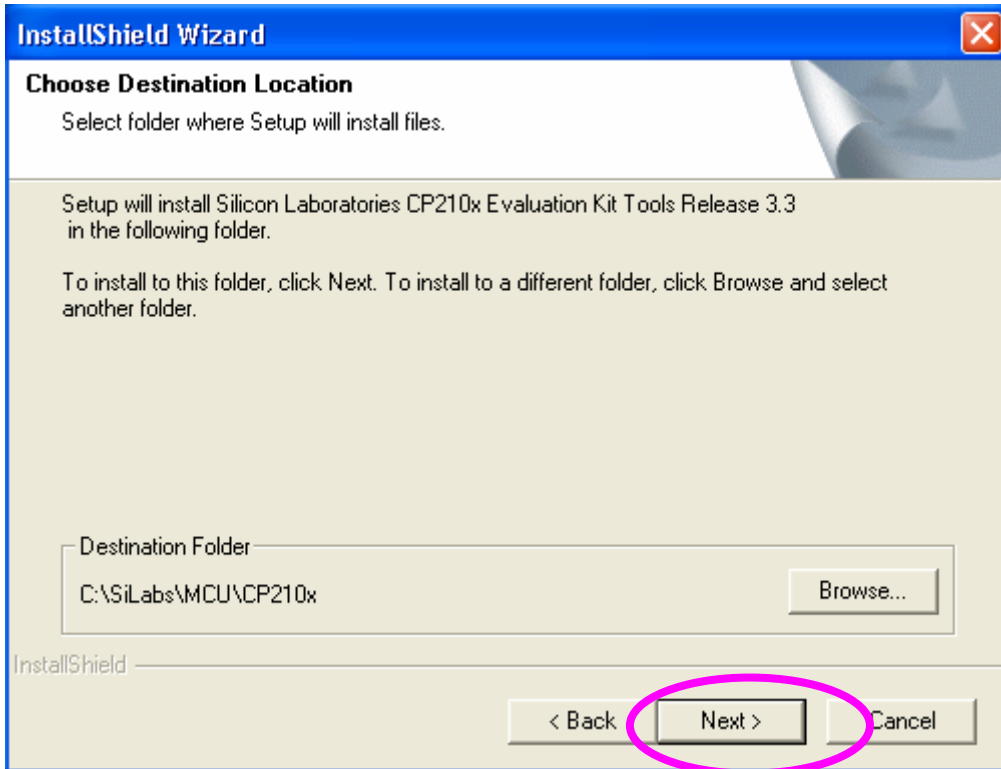
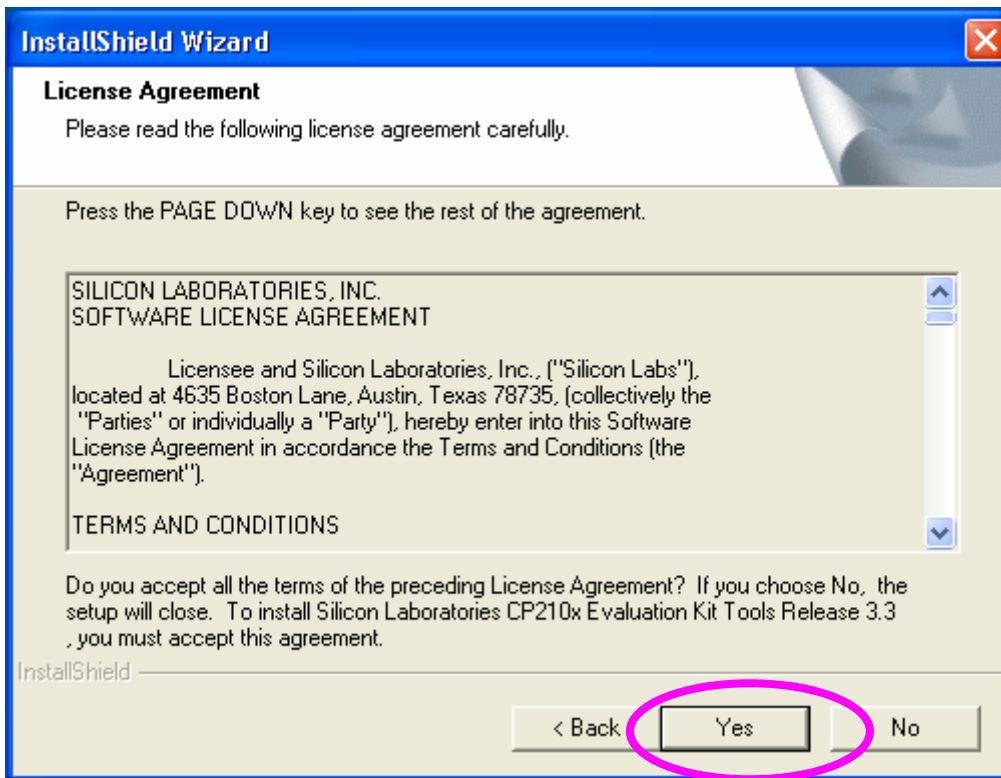
2. As you connect USB cable to the PC, the message will come up on PC screen to inform “a new hardware is found”. Now, the driver is installed on the system.

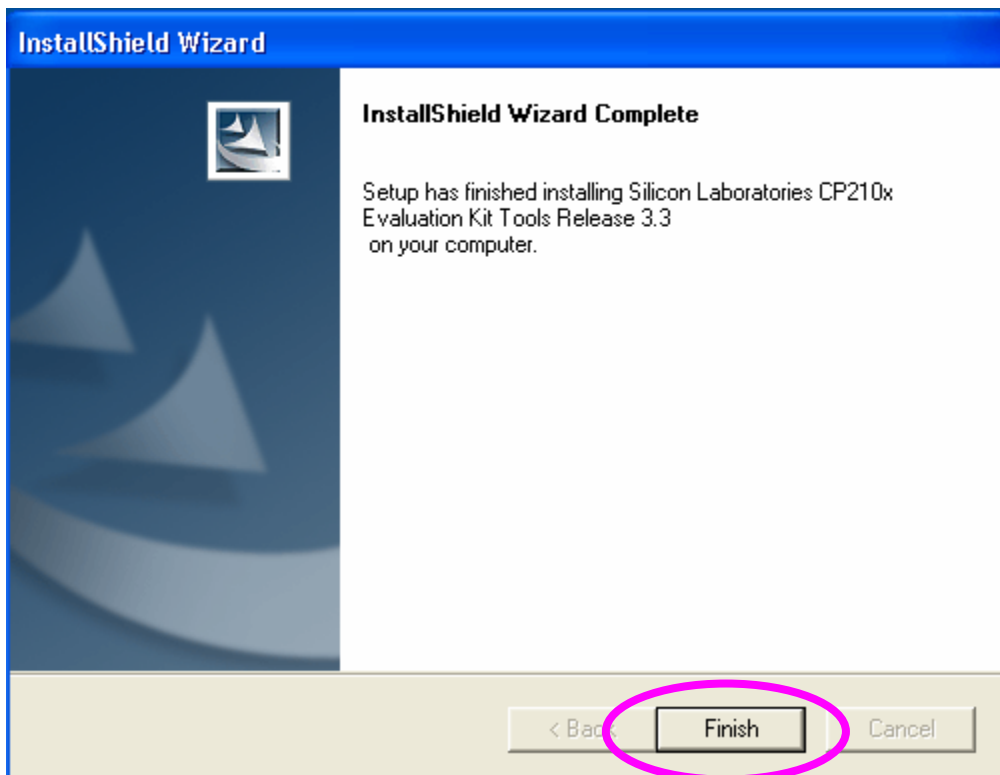
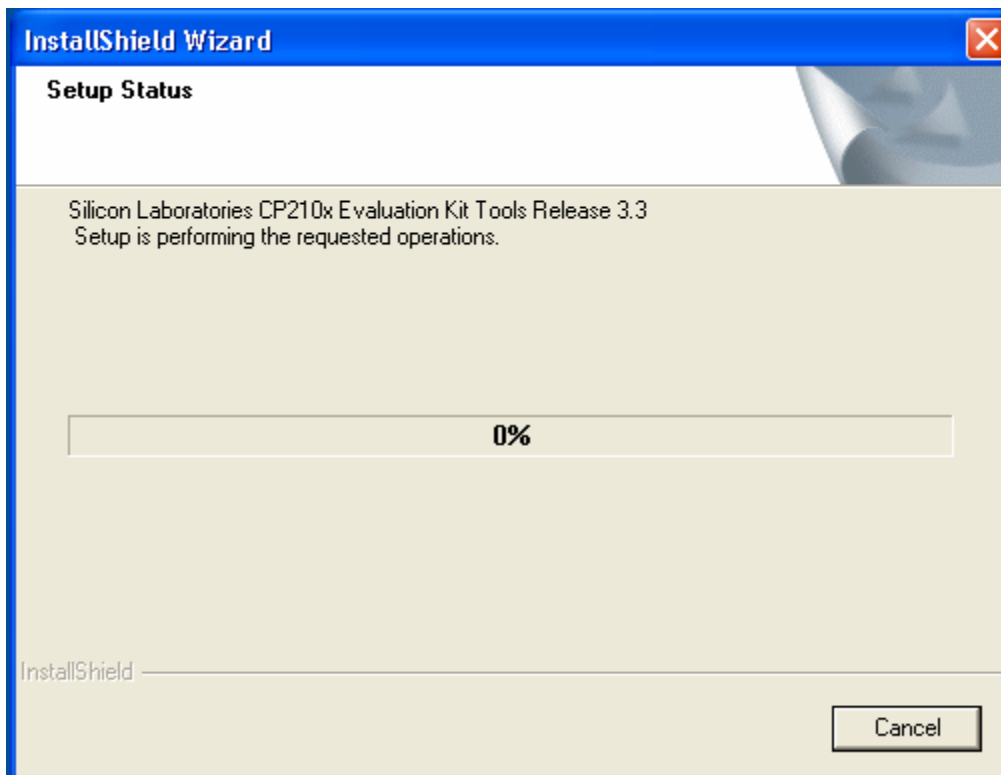
Copying the driver



As you click the icon (shown left) in the CD-ROM, the driver installation will be initiated in the following steps.





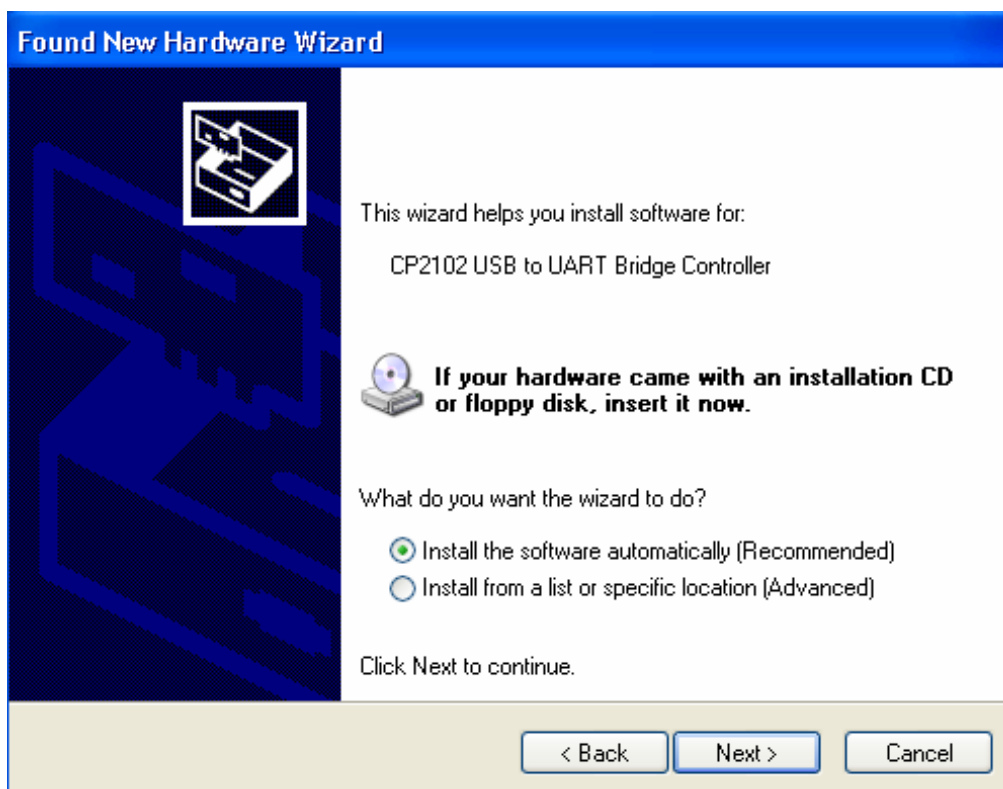


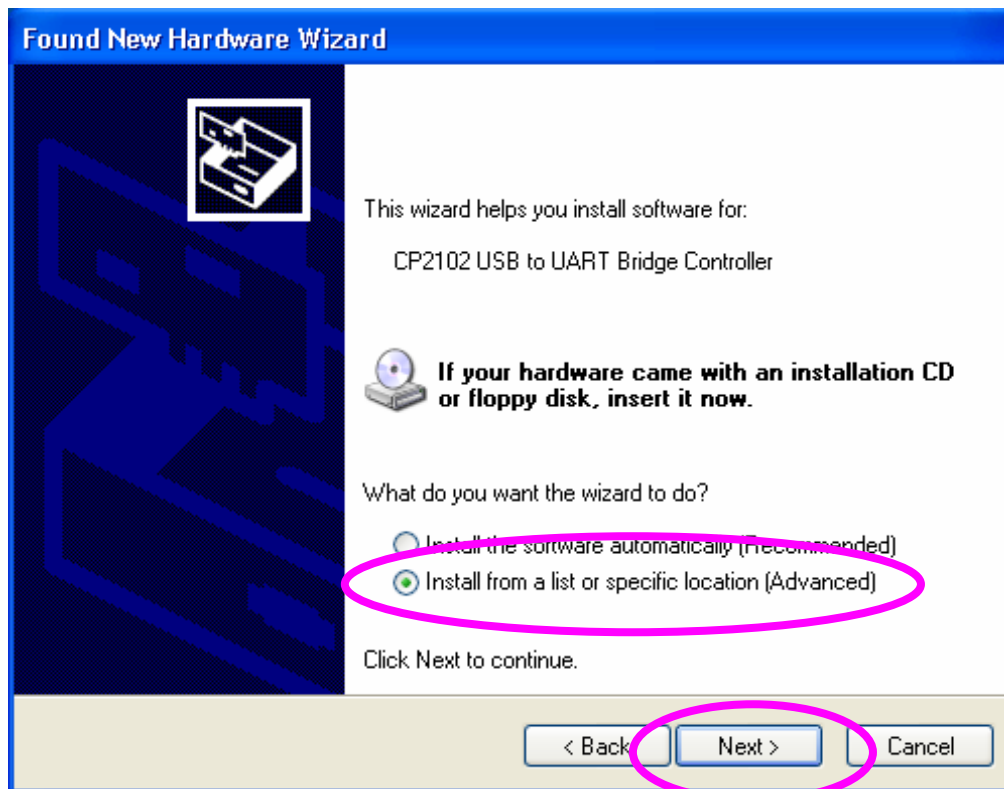
Now, the driver is properly copied.

Installation

Connect USB cable to PC.

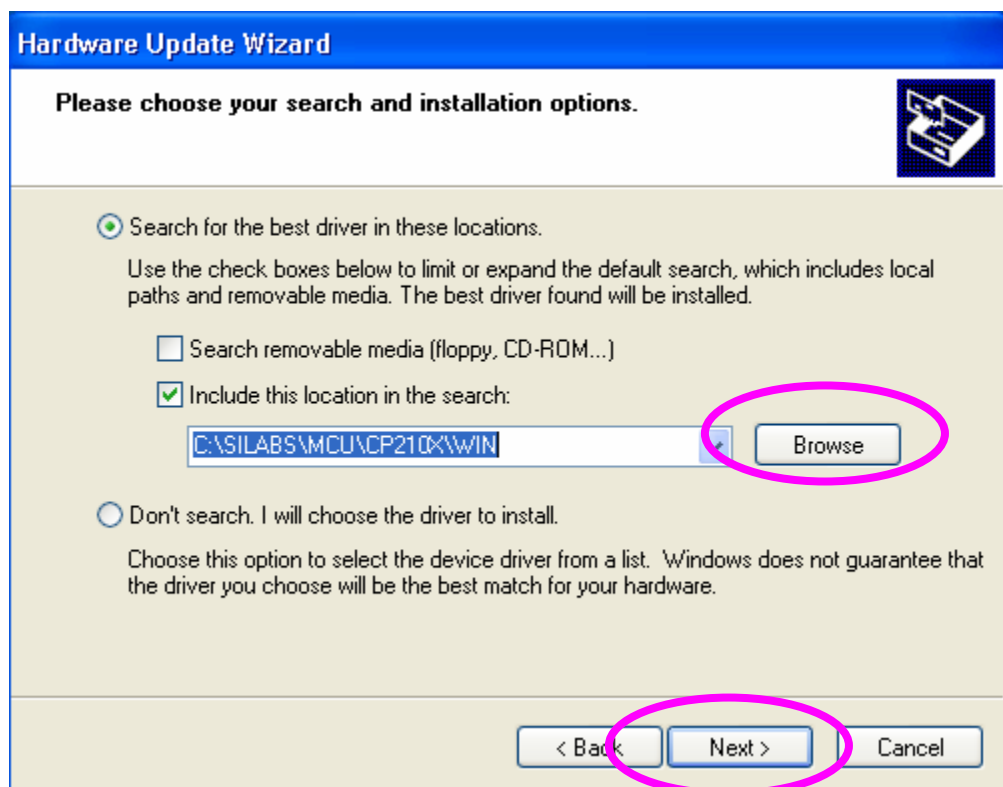
If the screen shown left appears, please check “No, not this time”.

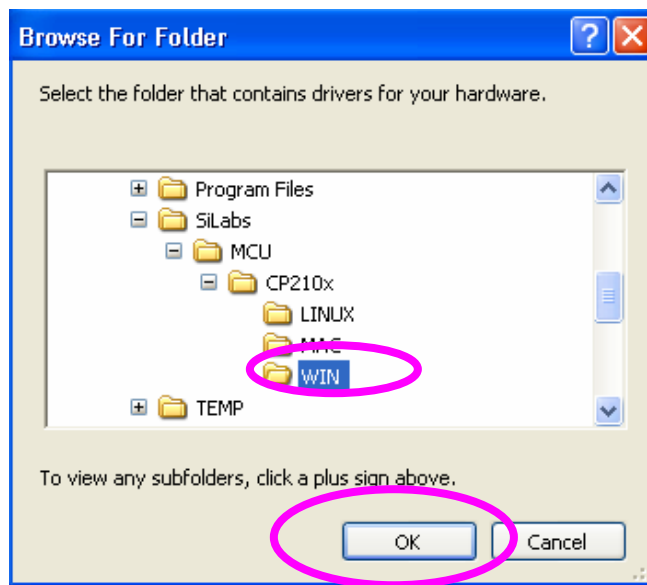




Check the location for the installation.

If the driver's location is different from the one which you copied to, select it by clicking "Browse".



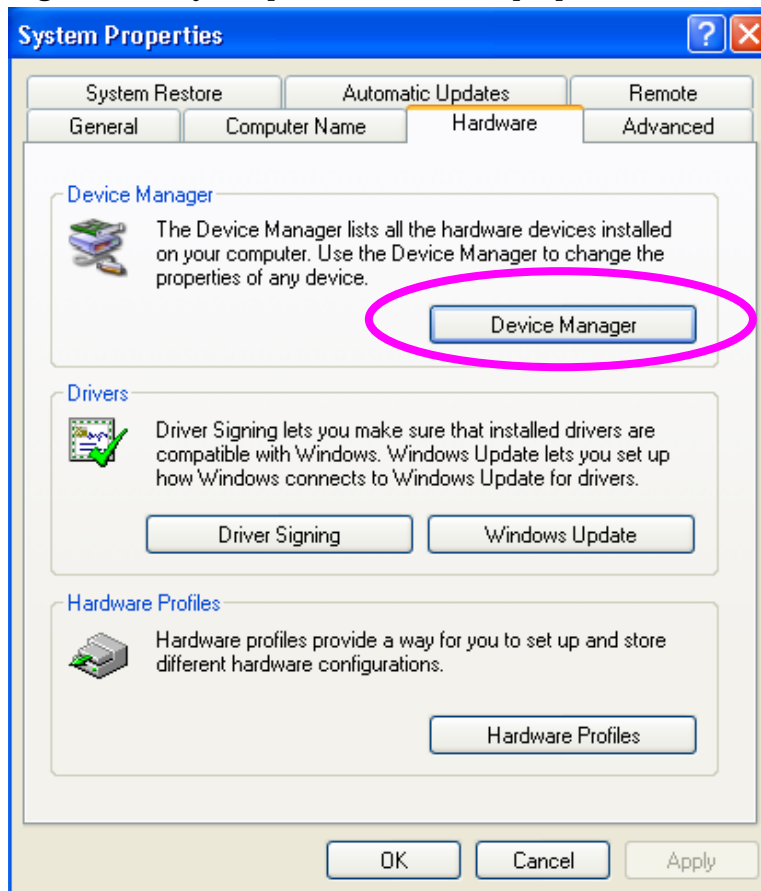


Installation is complete.

Checking the port

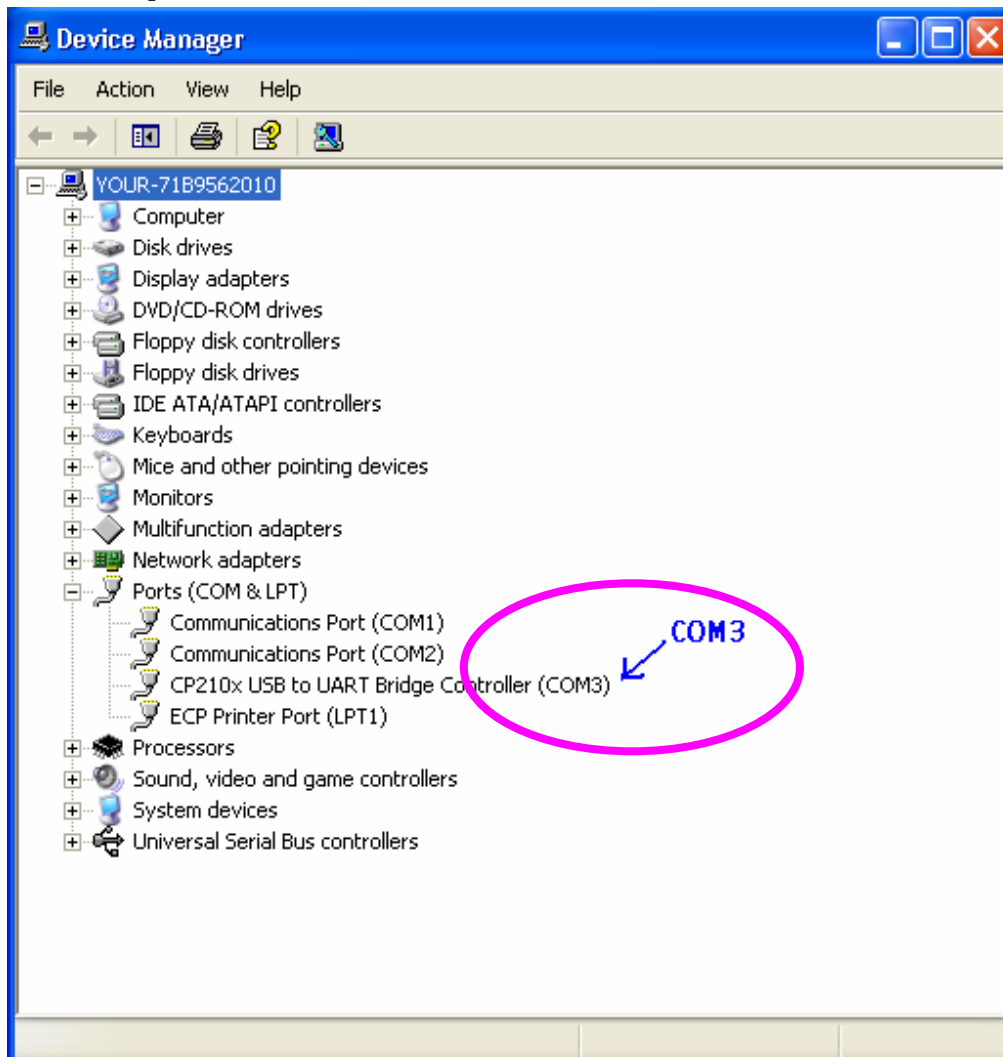
Select the port which corresponds to those selected by software.

Right-click “my computer”, and select “properties” => “device manager”



Click + on Ports (COM&LPT) to open. Check the allocated port number.

In the sample screen (left), COM3 is allocated.



Select the port which corresponds to those selected by software.