

B-RAD 7000-S

Part Number: 31809



700 - 7.000 NM

MAX SPEED 2,1 RPM

TORQUE + ANGLE LIMITS

DATA LOGGING WITH GPS LOCATION

TORQUE CHECK FUNCTION

TRANSDUCER CONTROLLED

DOUBLE SAFETY TRIGGER

OPTION

SPECIFICATIONS

- **TORQUE RANGE:** 700 - 7.000 Nm
- **SPEED:** 2,1 RPM
- **WEIGHT:** 9,8 Kg with battery, excluding reaction arm and impact socket
- **SQUARE DRIVE:** 1½" inch square drive
- **BATTERY:** 1x 18V 8.0 Ah/144 Wh and 1x 5.5 Ah/99 Wh Lithium-ion battery
- **NOISE LEVEL:** Maximum 65 dB
- **TORQUE SETTING:** Steps of 1 Nm
- **REPEATABILITY ON SAME JOINT*:** +/- 2%.

* Test results from certified calibration lab

SUITABLE REACTION ARMS

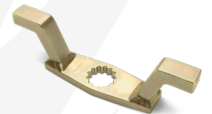
Standard
PN: 25286



Deep socket
PN: 26118



Double ended
PN: 26119



Blank
PN: 26120



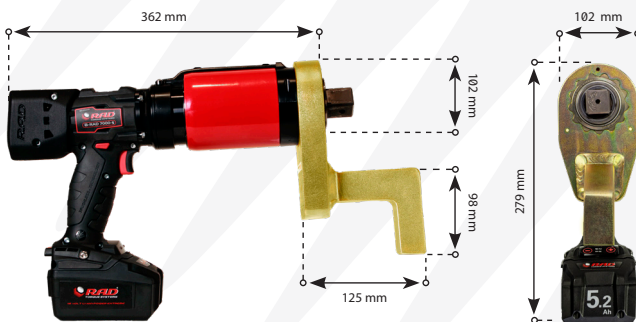
Double ended blank
PN: 26121



Safety sliding
On request



DIMENSIONS IN MM



TOOL KIT INCLUDING

- B-RAD 7000-S
- Standard reaction arm (PN: 25286)
- Two retaining rings (PN: 21455)
- 1 x 5.5 Ah and 1 x 8.0 Ah battery with quick charger
- Calibration certificate
- Usermanual
- QR code for Safety instructions
- Weatherproof storage case



IMPERIAL VERSION

- **MODEL:** B-RAD 5000-S
- **PART NUMBER:** 31808
- **TORQUE RANGE:** 500 - 5000 ft.lbs
- **WEIGHT:** 21.7 lbs.



Non Impacting



Safe & Reliable



Lithium-ion battery



According to European standards



Bluetooth connectivity



Torque + angle function



Torque + angle function



LABORATORY ACCREDITATION BUREAU ACCREDITED ISO/IEC 17025 Accredited ISO/IEC 17025

2024 - V.01 Disclaimer: The information in this document is subject to change without notice. While endeavored to keep the information up to date and correct, no rights can be derived. If there are any doubts or questions, please contact Radial Torque Tools B.V..

RAD
TORQUE SYSTEMS

WWW.RADIALTORQUE.EU

BATTERY SERIES

Accessories

Drop prevention

Prod. Nr.	Model
200476	B-RAD Drop prevention



Battery packs

Prod. Nr.	Model
31275	5.5 Ah LiHD battery pack
200473	8.0 Ah LiHD battery pack



Double Safety Button

Prod. Nr.	Double Safety Button model	Note	Suitable for
25949	B-RAD Double Safety Button	Hardware only	All B-RADs
25950	B-RAD Double Safety Button	Mounted on tool	All B-RADs
33501	B-RAD Smart Safety Button	Hardware only	All B-RADs
33502	B-RAD Smart Safety Button	Hardware only	Upgrade for all B-RADs with PN: 25950



Impact Sockets

Prod. Nr.	Hex size	Square drive	Bolt size	Suitable for
300153	24MM	½"	M16	B-RAD 700-S & 1400-S
200682	27MM	½"	M18	B-RAD 700-S & 1400-S
200683	30MM	½"	M20	B-RAD 700-S & 1400-S
300097	32MM	½"	M22	B-RAD 700-S & 1400-S
200190	24MM	¾"	M16	B-RAD 700-S & 1400-S
200210	27MM	¾"	M18	B-RAD 700-S & 1400-S
200211	30MM	¾"	M20	B-RAD 700-S & 1400-S
200212	32MM	¾"	M22	B-RAD 700-S & 1400-S
200004	36MM	¾"	M24	B-RAD 700-S & 1400-S
200215	38MM	¾"	M24	B-RAD 1400-S
200005	41MM	¾"	M27	B-RAD 1400-S
200006	46MM	¾"	M30	B-RAD 1400-S
200216	50MM	¾"	M33	B-RAD 1400-S
200227	36MM	1"	M24	B-RAD 2000-S & 4000-S
200229	41MM	1"	M27	B-RAD 2000-S & 4000-S
200230	46MM	1"	M30	B-RAD 2000-S & 4000-S
200007	50MM	1"	M33	B-RAD 2000-S & 4000-S
200008	55MM	1"	M36	B-RAD 2000-S & 4000-S
200009	60MM	1"	M39	B-RAD 4000-S
200238	55MM	1½"	M36	B-RAD 7000-S
200297	60MM	1½"	M39	B-RAD 7000-S
300052	70MM	1½"	M45	B-RAD 7000-S
200197	75MM	1½"	M48	B-RAD 7000-S
200241	80MM	1½"	M49	B-RAD 7000-S
200298	90MM	1½"	M52	B-RAD 7000-S

