

# B-RAD SELECT 1400-2

Part Number: 28267



- 540 - 1.400 Nm**
- MAX SPEED 71,0 RPM**
- AUTOMATIC 2-SPEED**
- DIGITAL TORQUE SETTING**
- AUTO REACTION**
- ARM BACK OFF**
- DOUBLE SAFETY BUTTON**

**OPTION**

## SPECIFICATIONS

- **TORQUE RANGE:** 540 - 1.400 Nm
- **SPEED:** 71,0 RPM
- **WEIGHT:** 4,3 Kg with battery, excluding reaction arm and impact socket
- **SQUARE DRIVE:** ¾ inch square drive
- **BATTERY:** Two 18V Lithium-ion batteries 5.2 Ah/93 Wh
- **NOISE LEVEL:** Maximum 65 dB
- **TORQUE SETTING:** Steps of 10 Nm or ft. lbs
- **REPEATABILITY ON SAME JOINT\*:** +/- 3%.

\* Test results from RAD's certified calibration lab

## SUITABLE REACTION ARMS

**Standard**  
PN: 19260



**Deep socket**  
PN: 13367



**Double ended**  
PN: 13368



**Blank**  
PN: 13364



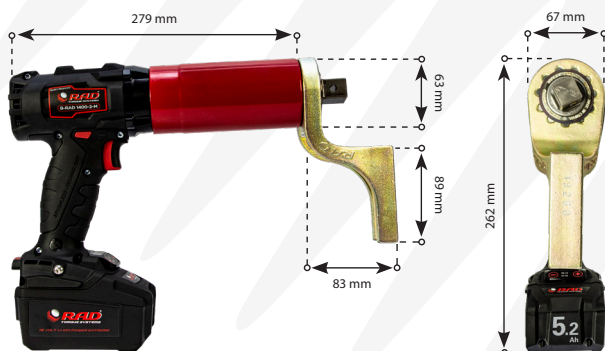
**Double ended blank**  
PN: 13365



**Safety sliding**  
PN: 25243



## DIMENSIONS IN MM



## TOOL KIT INCLUDING

- B-RAD SELECT 1400-2
- Standard reaction arm (PN: 19260)
- Two retaining rings (PN: 12733)
- Two batteries with quick charger
- Calibration certificate
- Usermanual
- QR code for Safety instructions
- Weatherproof storage case.



## IMPERIAL VERSION

- **MODEL:** B-RAD SELECT 1000-2
- **PART NUMBER:** 28286
- **TORQUE RANGE:** 200 - 1000 ft.lbs
- **WEIGHT:** 9.4 lbs.



Non Impacting



Safe & Reliable



Lithium-ion battery



According to European standards



Bluetooth connectivity



Torque + angle function



Software data exchange



**LABORATORY ACCREDITATION BUREAU**  
ACCREDITED ISO/IEC 17025

Accredited ISO/IEC 17025

# BATTERY SERIES

## Accessories

### Drop prevention

| Prod. Nr. | Model                 |
|-----------|-----------------------|
| 200476    | B-RAD Drop prevention |



### Double Safety Button

| Prod. Nr. | Double Safety Button model | Note            | Suitable for                          |
|-----------|----------------------------|-----------------|---------------------------------------|
| 25949     | B-RAD Double Safety Button | Hardware only   | All B-RADs                            |
| 25950     | B-RAD Double Safety Button | Mounted on tool | All B-RADs                            |
| 33501     | B-RAD Smart Safety Button  | Hardware only   | All B-RADs                            |
| 33502     | B-RAD Smart Safety Button  | Hardware only   | Upgrade for all B-RADs with PN: 25950 |



### Impact Sockets

| Prod. Nr. | Hex size | Square drive | Bolt size | Suitable for                 |
|-----------|----------|--------------|-----------|------------------------------|
| 200680    | 17MM     | 1/2"         | M10       | B-RAD SELECT 275             |
| 300152    | 19MM     | 1/2"         | M12       | B-RAD SELECT 275             |
| 200681    | 22MM     | 1/2"         | M14       | B-RAD SELECT 275             |
| 300153    | 24MM     | 1/2"         | M16       | B-RAD SELECT 275, 700 & 1400 |
| 200682    | 27MM     | 1/2"         | M18       | B-RAD SELECT 275, 700 & 1400 |
| 200683    | 30MM     | 1/2"         | M20       | B-RAD SELECT 700 & 1400      |
| 300097    | 32MM     | 1/2"         | M22       | B-RAD SELECT 700 & 1400      |
| 200187    | 17MM     | 3/4"         | M10       | B-RAD SELECT 275             |
| 200219    | 19MM     | 3/4"         | M12       | B-RAD SELECT 275             |
| 200189    | 22MM     | 3/4"         | M14       | B-RAD SELECT 275             |
| 200190    | 24MM     | 3/4"         | M16       | B-RAD SELECT 275, 700 & 1400 |
| 200210    | 27MM     | 3/4"         | M18       | B-RAD SELECT 275, 700 & 1400 |
| 200211    | 30MM     | 3/4"         | M20       | B-RAD SELECT 700 & 1400      |
| 200212    | 32MM     | 3/4"         | M22       | B-RAD SELECT 700 & 1400      |
| 200004    | 36MM     | 3/4"         | M24       | B-RAD SELECT 700 & 1400      |
| 200215    | 38MM     | 3/4"         | M24       | B-RAD SELECT 1400            |
| 200005    | 41MM     | 3/4"         | M27       | B-RAD SELECT 1400            |
| 200006    | 46MM     | 3/4"         | M30       | B-RAD SELECT 1400            |
| 200216    | 50MM     | 3/4"         | M33       | B-RAD SELECT 1400            |
| 200227    | 36MM     | 1"           | M24       | B-RAD SELECT 2000 & 4000     |
| 200229    | 41MM     | 1"           | M27       | B-RAD SELECT 2000 & 4000     |
| 200230    | 46MM     | 1"           | M30       | B-RAD SELECT 2000 & 4000     |
| 200007    | 50MM     | 1"           | M33       | B-RAD SELECT 2000 & 4000     |
| 200008    | 55MM     | 1"           | M36       | B-RAD SELECT 2000 & 4000     |
| 200009    | 60MM     | 1"           | M39       | B-RAD SELECT 4000            |
| 200238    | 55MM     | 1 1/2"       | M36       | B-RAD SELECT 7000            |
| 200297    | 60MM     | 1 1/2"       | M39       | B-RAD SELECT 7000            |
| 300052    | 70MM     | 1 1/2"       | M45       | B-RAD SELECT 7000            |
| 200197    | 75MM     | 1 1/2"       | M48       | B-RAD SELECT 7000            |
| 200241    | 80MM     | 1 1/2"       | M49       | B-RAD SELECT 7000            |
| 200298    | 90MM     | 1 1/2"       | M52       | B-RAD SELECT 7000            |



### Battery packs

| Prod. Nr. | Model                    |
|-----------|--------------------------|
| 31275     | 5.5 Ah LiHD battery pack |
| 200473    | 8.0 Ah LiHD battery pack |



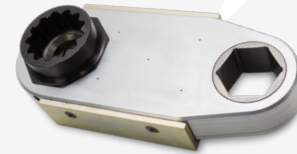
### CX Offset Gearboxes

| Prod. Nr. | Model     | Max output | Ratio |
|-----------|-----------|------------|-------|
| 27978     | Hex 50 mm | 3400 Nm    | 1:1   |
| 28540     | Hex 65 mm | 5000 Nm    | 1:1   |

| Prod. Nr. | Suitable for            | Gearbox |
|-----------|-------------------------|---------|
| 11537     | B-RAD SELECT 275        | 27978   |
| 16155     | B-RAD SELECT 700 & 1400 | 27978   |
| 26994     | B-RAD SELECT 2000       | 27978   |
| 27853     | B-RAD SELECT 4000       | 27978   |
| 28531     | B-RAD SELECT 4000       | 28540   |

Hex reducer on request.



### Nose extension series

| Prod. Nr. | Model             | Reaction arm | Length |
|-----------|-------------------|--------------|--------|
| 14195     | B-RAD SELECT 1400 | 13512        | 324 mm |
| 14200     | B-RAD SELECT 1400 | 13512        | 400 mm |
| 14205     | B-RAD SELECT 1400 | 13512        | 476 mm |
| 18185     | B-RAD SELECT 2000 | 20153        | 349 mm |
| 19058     | B-RAD SELECT 2000 | 20153        | 400 mm |
| 19059     | B-RAD SELECT 2000 | 20153        | 476 mm |
| 27641     | B-RAD SELECT 4000 | 13484        | 305 mm |
| 27643     | B-RAD SELECT 4000 | 13484        | 381 mm |
| 27651     | B-RAD SELECT 4000 | 13484        | 457 mm |



### Swivelling tool handle & hanger

| Prod. Nr. | Suitable for                 |
|-----------|------------------------------|
| 19827     | B-RAD SELECT 275, 700 & 1400 |
| 19825     | B-RAD SELECT 2000            |
| 26751     | B-RAD SELECT 4000            |
| 26674     | B-RAD SELECT 7000            |

