

B-RAD OFFSET 4000

Part Number: 201031



800 - 4.000 Nm

MAX SPEED 3,0 RPM

**AUTO REACTION ARM
BACK OFF**

BRUSHLESS MOTOR

DOUBLE SAFETY TRIGGER

SPECIFICATIONS

- **TORQUE RANGE:** 800 - 4.000 Nm
- **SPEED:** 3,0 RPM
- **WEIGHT:** 6,4 Kg with battery, excluding reaction arm and impact socket
- **SQUARE DRIVE:** 1 inch square drive (replaceable)
- **BATTERY:** 1x 18V 8.0 Ah/144 Wh and 1x 5.5 Ah/99 Wh Lithium-ion battery
- **NOISE LEVEL:** Maximum 65 dB
- **TORQUE SETTING:** Steps of 10 Nm or ft. lbs
- **REPEATABILITY ON SAME JOINT*:** +/- 3%.

* Test results from RAD's certified calibration lab

SUITABLE REACTION ARMS

Standard
PN: 27022



Deep socket
PN: 24814



Double ended
PN: 25437



Blank
PN: 24813



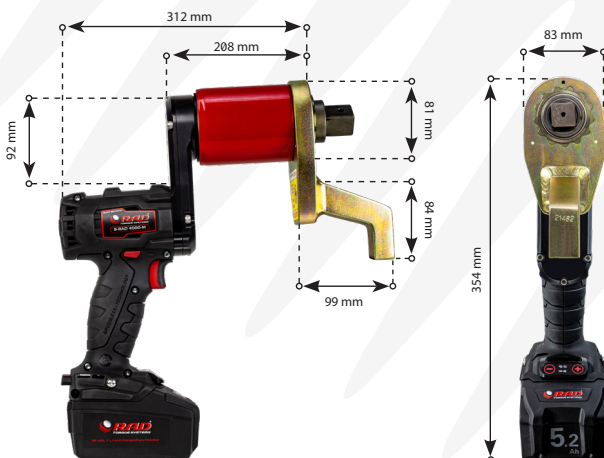
Double ended blank
PN: 25016



Safety sliding
PN: 25987



DIMENSIONS IN MM



TOOL KIT INCLUDING

- B-RAD OFFSET 4000
- Standard reaction arm (PN: 21482)
- Two retaining rings (PN: 21474)
- Swivelling tool handle & hanger
- Two batteries with quick charger
- Calibration certificate
- Usermanual
- QR code for Safety instructions
- Weatherproof storage case.



IMPERIAL VERSION

- **MODEL:** B-RAD OFFSET 3000
- **PART NUMBER:** 30006
- **TORQUE RANGE:** 600 - 3000 ft.lbs
- **WEIGHT:** 14.3 lbs.



Non Impacting



Safe & Reliable



Lithium-ion battery



According to European standards



LABORATORY ACCREDITATION BUREAU ACCREDITED ISO/IEC 17025

Accredited ISO/IEC 17025

BATTERY SERIES

Accessories

Drop prevention

Prod. Nr.	Model
200476	B-RAD Drop prevention



Double Safety Button

Prod. Nr.	Double Safety Button model	Note	Suitable for
25949	B-RAD Double Safety Button	Hardware only	All B-RADs
25950	B-RAD Double Safety Button	Mounted on tool	All B-RADs
33501	B-RAD Smart Safety Button	Hardware only	All B-RADs
33502	B-RAD Smart Safety Button	Hardware only	Upgrade for all B-RADs with PN: 25950



Impact Sockets

Prod. Nr.	Hex size	Square drive	Bolt size	Suitable for
200680	17MM	½"	M10	B-RAD OFFSET 275
300152	19MM	½"	M12	B-RAD OFFSET 275
200681	22MM	½"	M14	B-RAD OFFSET 275
300153	24MM	½"	M16	B-RAD OFFSET 275, 700 & 1400
200682	27MM	½"	M18	B-RAD OFFSET 275, 700 & 1400
200683	30MM	½"	M20	B-RAD OFFSET 700 & 1400
300097	32MM	½"	M22	B-RAD OFFSET 700 & 1400
200187	17MM	¾"	M10	B-RAD OFFSET 275
200219	19MM	¾"	M12	B-RAD OFFSET 275
200189	22MM	¾"	M14	B-RAD OFFSET 275
200190	24MM	¾"	M16	B-RAD OFFSET 275, 700 & 1400
200210	27MM	¾"	M18	B-RAD OFFSET 275, 700 & 1400
200211	30MM	¾"	M20	B-RAD OFFSET 700 & 1400
200212	32MM	¾"	M22	B-RAD OFFSET 700 & 1400
200004	36MM	¾"	M24	B-RAD OFFSET 700 & 1400
200215	38MM	¾"	M24	B-RAD OFFSET 1400
200005	41MM	¾"	M27	B-RAD OFFSET 1400
200006	46MM	¾"	M30	B-RAD OFFSET 1400
200216	50MM	¾"	M33	B-RAD OFFSET 1400
200227	36MM	1"	M24	B-RAD OFFSET 2000 & 4000
200229	41MM	1"	M27	B-RAD OFFSET 2000 & 4000
200230	46MM	1"	M30	B-RAD OFFSET 2000 & 4000
200007	50MM	1"	M33	B-RAD OFFSET 2000 & 4000
200008	55MM	1"	M36	B-RAD OFFSET 2000 & 4000
200009	60MM	1"	M39	B-RAD OFFSET 4000
200238	55MM	1½"	M36	B-RAD OFFSET 7000
200297	60MM	1½"	M39	B-RAD OFFSET 7000
300052	70MM	1½"	M45	B-RAD OFFSET 7000
200197	75MM	1½"	M48	B-RAD OFFSET 7000
200241	80MM	1½"	M49	B-RAD OFFSET 7000
200298	90MM	1½"	M52	B-RAD OFFSET 7000



Battery packs

Prod. Nr.	Model
31275	5.5 Ah LiHD battery pack
200473	8.0 Ah LiHD battery pack

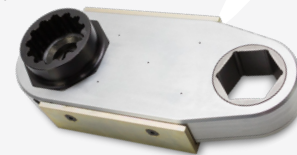


CX Offset Gearboxes

Prod. Nr.	Model	Max output	Ratio
27978	Hex 50 mm	3400 Nm	1:1
28540	Hex 65 mm	5000 Nm	1:1

Prod. Nr.	Suitable for	Gearbox
11537	B-RAD OFFSET 275	27978
16155	B-RAD OFFSET 700 & 1400	27978
26994	B-RAD OFFSET 2000	27978
27853	B-RAD OFFSET 4000	27978
28531	B-RAD OFFSET 4000	28540

Hex reducer on request.



Nose extension series

Prod. Nr.	Model	Reaction arm	Length
14195	B-RAD OFFSET 1400	13512	324 mm
14200	B-RAD OFFSET 1400	13512	400 mm
14205	B-RAD OFFSET 1400	13512	476 mm
18185	B-RAD OFFSET 2000	20153	349 mm
19058	B-RAD OFFSET 2000	20153	400 mm
19059	B-RAD OFFSET 2000	20153	476 mm
27641	B-RAD OFFSET 4000	13484	305 mm
27643	B-RAD OFFSET 4000	13484	381 mm
27651	B-RAD OFFSET 4000	13484	457 mm



Swivelling tool handle & hanger

Prod. Nr.	Suitable for
19827	B-RAD OFFSET 275, 700 & 1400
19825	B-RAD OFFSET 2000
26751	B-RAD OFFSET 4000
26674	B-RAD OFFSET 7000

