

# B-RAD OFFSET 1400

Part Number: 201027



**270 - 1.400 Nm**

**MAX SPEED 10,5 RPM**

**AUTO REACTION ARM  
BACK OFF**

**BRUSHLESS MOTOR**

**DOUBLE SAFETY TRIGGER**

OPTION

## SPECIFICATIONS

- **TORQUE RANGE:** 270 - 1.400 Nm
- **SPEED:** 10,5 RPM
- **WEIGHT:** 3,9 Kg with battery, excluding reaction arm and impact socket
- **SQUARE DRIVE:** ¾ inch square drive
- **BATTERY:** Two 18V Lithium-ion batteries 5.2 Amp/93 Wh
- **NOISE LEVEL:** Maximum 65 dB
- **TORQUE SETTING:** Steps of 10 Nm or ft. lbs
- **REPEATABILITY ON SAME JOINT\*:** +/- 3%.

\* Test results from RAD's certified calibration lab

## SUITABLE REACTION ARMS

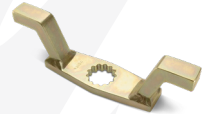
**Standard**  
PN: 19260



**Deep socket**  
PN: 13367



**Double ended**  
PN: 13368



**Blank**  
PN: 13364



**Double ended blank**  
PN: 13365



**Safety sliding**  
PN: 25243



## DIMENSIONS IN MM



## TOOL KIT INCLUDING

- B-RAD OFFSET 1400
- Standard reaction arm (PN: 19260)
- Two retaining rings (PN: 12733)
- Two batteries with quick charger
- QR code for Safety instructions
- Weatherproof storage case
- Calibration certificate
- Usermanual.



## IMPERIAL VERSION

- **MODEL:** B-RAD OFFSET 1000
- **PART NUMBER:** 29572
- **TORQUE RANGE:** 200 - 1000 ft.lbs
- **WEIGHT:** 8.8 lbs.



Non Impacting



Safe & Reliable



Lithium-ion battery



According to European standards



LABORATORY ACCREDITATION BUREAU  
ACCREDITED ISO/IEC 17025

Accredited ISO/IEC 17025

2024 - V.01 Disclaimer: The information in this document is subject to change without notice. While endeavored to keep the information up to date and correct, no rights can be derived. If there are any doubts or questions, please contact Radial Torque Tools B.V..

**RAD**  
TORQUE SYSTEMS

WWW.RADIALTORQUE.EU

# BATTERY SERIES

## Accessories

### Drop prevention

Prod. Nr.	Model
200476	B-RAD Drop prevention



### Double Safety Button

Prod. Nr.	Double Safety Button model	Note	Suitable for
25949	B-RAD Double Safety Button	Hardware only	All B-RADs
25950	B-RAD Double Safety Button	Mounted on tool	All B-RADs
33501	B-RAD Smart Safety Button	Hardware only	All B-RADs
33502	B-RAD Smart Safety Button	Hardware only	Upgrade for all B-RADs with PN: 25950



### Impact Sockets

Prod. Nr.	Hex size	Square drive	Bolt size	Suitable for
200680	17MM	½"	M10	B-RAD OFFSET 275
300152	19MM	½"	M12	B-RAD OFFSET 275
200681	22MM	½"	M14	B-RAD OFFSET 275
300153	24MM	½"	M16	B-RAD OFFSET 275, 700 & 1400
200682	27MM	½"	M18	B-RAD OFFSET 275, 700 & 1400
200683	30MM	½"	M20	B-RAD OFFSET 700 & 1400
300097	32MM	½"	M22	B-RAD OFFSET 700 & 1400
200187	17MM	¾"	M10	B-RAD OFFSET 275
200219	19MM	¾"	M12	B-RAD OFFSET 275
200189	22MM	¾"	M14	B-RAD OFFSET 275
200190	24MM	¾"	M16	B-RAD OFFSET 275, 700 & 1400
200210	27MM	¾"	M18	B-RAD OFFSET 275, 700 & 1400
200211	30MM	¾"	M20	B-RAD OFFSET 700 & 1400
200212	32MM	¾"	M22	B-RAD OFFSET 700 & 1400
200004	36MM	¾"	M24	B-RAD OFFSET 700 & 1400
200215	38MM	¾"	M24	B-RAD OFFSET 1400
200005	41MM	¾"	M27	B-RAD OFFSET 1400
200006	46MM	¾"	M30	B-RAD OFFSET 1400
200216	50MM	¾"	M33	B-RAD OFFSET 1400
200227	36MM	1"	M24	B-RAD OFFSET 2000 & 4000
200229	41MM	1"	M27	B-RAD OFFSET 2000 & 4000
200230	46MM	1"	M30	B-RAD OFFSET 2000 & 4000
200007	50MM	1"	M33	B-RAD OFFSET 2000 & 4000
200008	55MM	1"	M36	B-RAD OFFSET 2000 & 4000
200009	60MM	1"	M39	B-RAD OFFSET 4000
200238	55MM	1½"	M36	B-RAD OFFSET 7000
200297	60MM	1½"	M39	B-RAD OFFSET 7000
300052	70MM	1½"	M45	B-RAD OFFSET 7000
200197	75MM	1½"	M48	B-RAD OFFSET 7000
200241	80MM	1½"	M49	B-RAD OFFSET 7000
200298	90MM	1½"	M52	B-RAD OFFSET 7000



### Battery packs

Prod. Nr.	Model
31275	5.5 Ah LiHD battery pack
200473	8.0 Ah LiHD battery pack



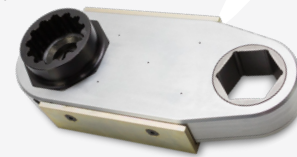
### CX Offset Gearboxes

Prod. Nr.	Model	Max output	Ratio
27978	Hex 50 mm	3400 Nm	1:1
28540	Hex 65 mm	5000 Nm	1:1

Prod. Nr.	Suitable for	Gearbox
11537	B-RAD OFFSET 275	27978
16155	B-RAD OFFSET 700 & 1400	27978
26994	B-RAD OFFSET 2000	27978
27853	B-RAD OFFSET 4000	27978
28531	B-RAD OFFSET 4000	28540

Hex reducer on request.



### Nose extension series

Prod. Nr.	Model	Reaction arm	Length
14195	B-RAD OFFSET 1400	13512	324 mm
14200	B-RAD OFFSET 1400	13512	400 mm
14205	B-RAD OFFSET 1400	13512	476 mm
18185	B-RAD OFFSET 2000	20153	349 mm
19058	B-RAD OFFSET 2000	20153	400 mm
19059	B-RAD OFFSET 2000	20153	476 mm
27641	B-RAD OFFSET 4000	13484	305 mm
27643	B-RAD OFFSET 4000	13484	381 mm
27651	B-RAD OFFSET 4000	13484	457 mm



### Swivelling tool handle & hanger

Prod. Nr.	Suitable for
19827	B-RAD OFFSET 275, 700 & 1400
19825	B-RAD OFFSET 2000
26751	B-RAD OFFSET 4000
26674	B-RAD OFFSET 7000

